



DRESS CODE



SHIRTS

Students are required to wear the NW-REI Uniform shirt. Only the top button is allowed to be unbuttoned and long sleeves may not be rolled up. For safety reasons and to establish a professional appearance, shirts need to be tucked in at all times. All shirts must be wrinkle free. Undershirts need to be one neutral color with no visible writing.



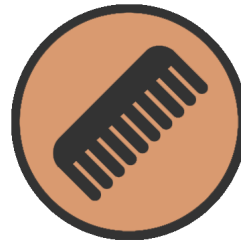
PANTS

All students are required to wear jeans or cotton work pants. Pants may have pockets on the legs. All pants must be worn at the waist; baggy pants and carpenter style pants are not allowed. Pants should be free of holes and worn spots. Belts are recommended and must be a solid color and have a standard size buckle.



OUTTERWEAR

Outerwear may be worn when entering and exiting the building and classes. Outerwear in the classroom is subject to instructor approval. NW-REI sweatshirts are preferred. Outwear must be professional. During foul weather conditions, rain gear is recommended. **IAHA name badge is required and may be worn with a lanyard.**



ACCESSORIES AND GROOMING

When working with equipment, all jewelry and accessories should be removed or left at home. Gauges, loops or plugs must be removed from ears, however, flesh colored plugs are acceptable. Hair must be clean and neat. Long hair that presents a potential hazard must be tied back. Nails should be a conservative length.



BOOTS

Students must wear lace up leather safety-toe boots with socks at all times. The boots must cover the ankle (4-6 inch rise preferred) and have a heel of .5 inches or larger for climbing. Safety toe boots must be ASTM/ANSI rated.



HATS

Hats may not be worn in the classrooms. When outside the classroom, an official NW-REI hat may be worn. Hats shall be worn properly with the brim directly in the center of the wearers head, facing forward.



Please call us at 800-868-1816 or visit nw-rei.com for more information